

**4-5 What is diffusion?**

**Lesson Review**

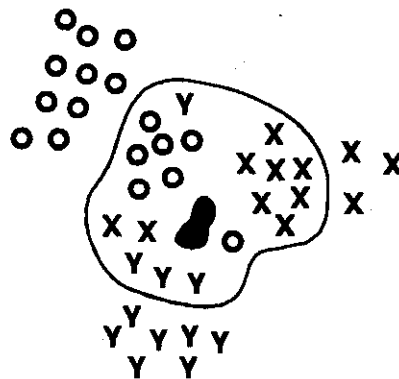
Write true if the statement is true. If the statement is false, change the underlined term to make the statement true.

- \_\_\_\_\_ 1. A cell is the smallest part of a substance that is still that substance.
- \_\_\_\_\_ 2. The movement of molecules from more crowded places to less crowded places is called diffusion.
- \_\_\_\_\_ 3. In order for a cell to carry on its life processes, oxygen and other materials must move into and out of the cell through the nucleus.
- \_\_\_\_\_ 4. Diffusion is controlled by the nucleus.
- \_\_\_\_\_ 5. Waste materials are carried out of a cell by diffusion.
- \_\_\_\_\_ 6. The movement of water through a membrane is called osmosis.
- \_\_\_\_\_ 7. Osmosis is controlled by the cell nucleus.
- \_\_\_\_\_ 8. The cell membrane has tiny holes in it that allow materials to pass into and out of the cell.

**Skill Challenge**

**Skills:** diagraming, using models, applying concepts

Each symbol on the diagram represents either a substance needed by the cell or a waste product. Study the diagram. Then, draw arrows on the diagram to show whether each substance will move into or out of the cell.



Answer the questions about the diagram.

1. Is substance X more likely a substance needed by the cell or a waste product? Explain. \_\_\_\_\_

\_\_\_\_\_

2. Is substance Y more likely a substance needed by the cell or a waste product? Explain. \_\_\_\_\_

\_\_\_\_\_

**4-6 How do cells produce new cells?**

**Lesson Review**

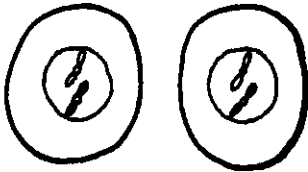
Write the term that best completes each statement in the space provided.

1. The process by which cells produce new cells is called \_\_\_\_\_.
2. Cell division is controlled by the \_\_\_\_\_.
3. The cell parts that determine what traits a living thing will have are called \_\_\_\_\_.
4. During cell division, each chromosome makes an \_\_\_\_\_ of itself.
5. During cell division, the nucleus divides in a process called \_\_\_\_\_.
6. The new cells formed during cell division are called \_\_\_\_\_ cells.
7. During cell division, plant cells form a new cell membrane and a new \_\_\_\_\_.
8. The two cells formed by cell division are about \_\_\_\_\_ the size of the parent cell.

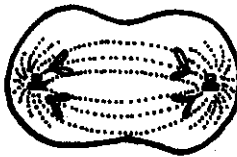
**Skill Challenge**

**Skills:** analyzing, sequencing

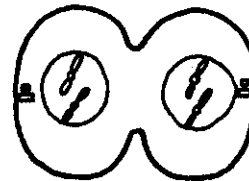
Study the drawings of the stages of cell division. Place the drawings in the correct order by writing the numbers 1 (first) through 5 (last) in the spaces provided.



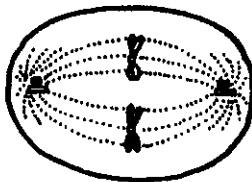
a. \_\_\_\_\_



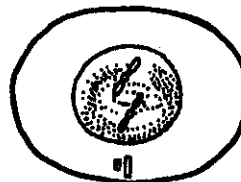
b. \_\_\_\_\_



c. \_\_\_\_\_



d. \_\_\_\_\_



e. \_\_\_\_\_